

Alcohol

1. Brain

- Memory loss
- Hallucinations
- Brain damage

2. Lungs

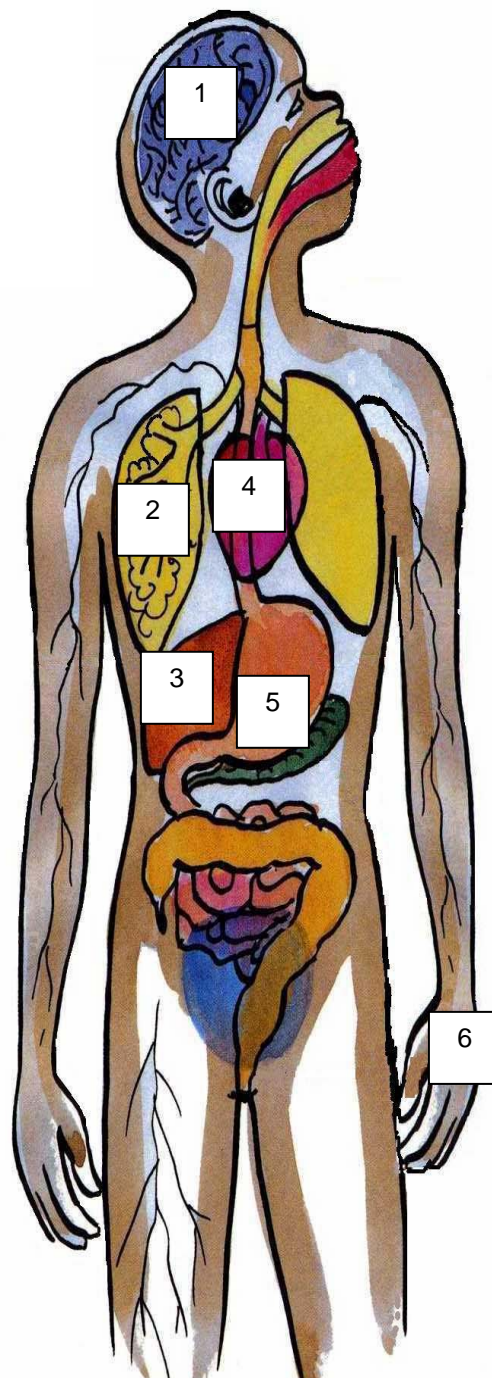
- Coughing

3. Liver and pancreas

- Hepatitis
- Swollen liver
- Cirrhosis
- Diabetes
- Pancreatitis

4. Heart

- High blood pressure
- Enlarged heart



Effects of Alcohol use

Signs & Symptoms

- Fits
- Hallucinations
- Memory loss
- Headaches
- Numbness
- Vomiting

5. Stomach

- Ulcers
- Gastritis
- Vomiting blood

6. Hands and feet

- Tingling and numbness

People who drink alcohol also experience behavioural problems such as aggression, mental and emotional health problems that includes anxiety and depression.

Cannabis

Ganga, Yarni, Pot, Marijuana, Weed, Grass. Skunk, Dope, Hash

1. Brain

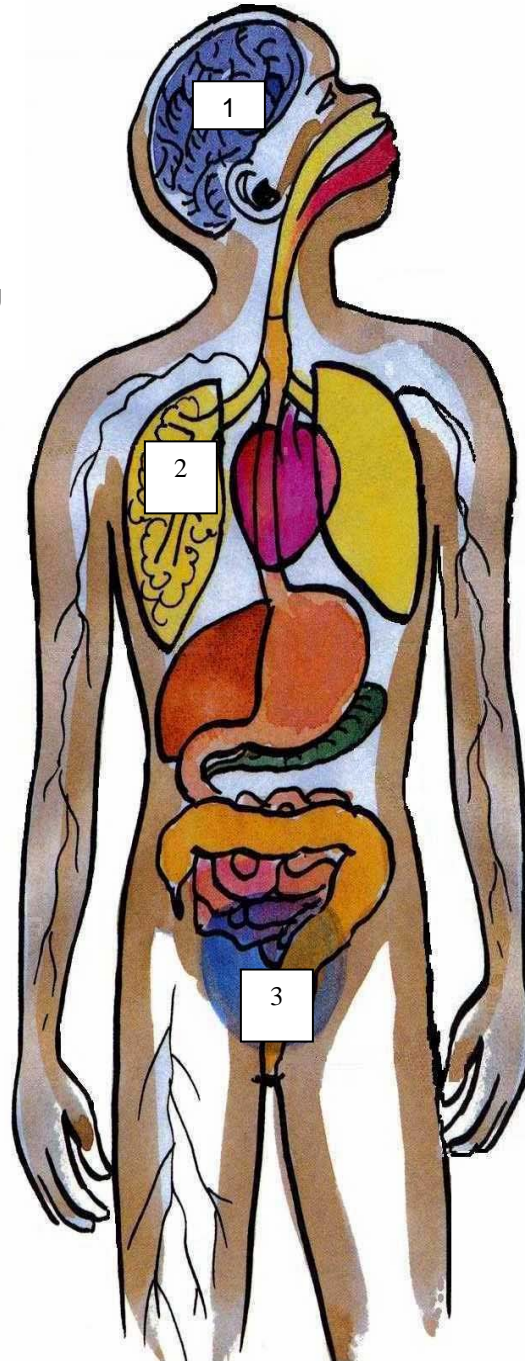
- Hallucinations and paranoia
- Anxiety and panic
- Problems with learning and remembering

2. Lungs

- Cancer
- Bronchitis
- Respiratory diseases

3. Sex organs

- Lower sperm count/irregular menstrual cycles
- Less sex drive



Effects of Cannabis Use

Signs & Symptoms

- Vomiting
- Reddened eyes
- Eating more
- Confusion, anxiety and panic
- Memory loss

Amphetamines, Ecstasy, LSD

1. Brain

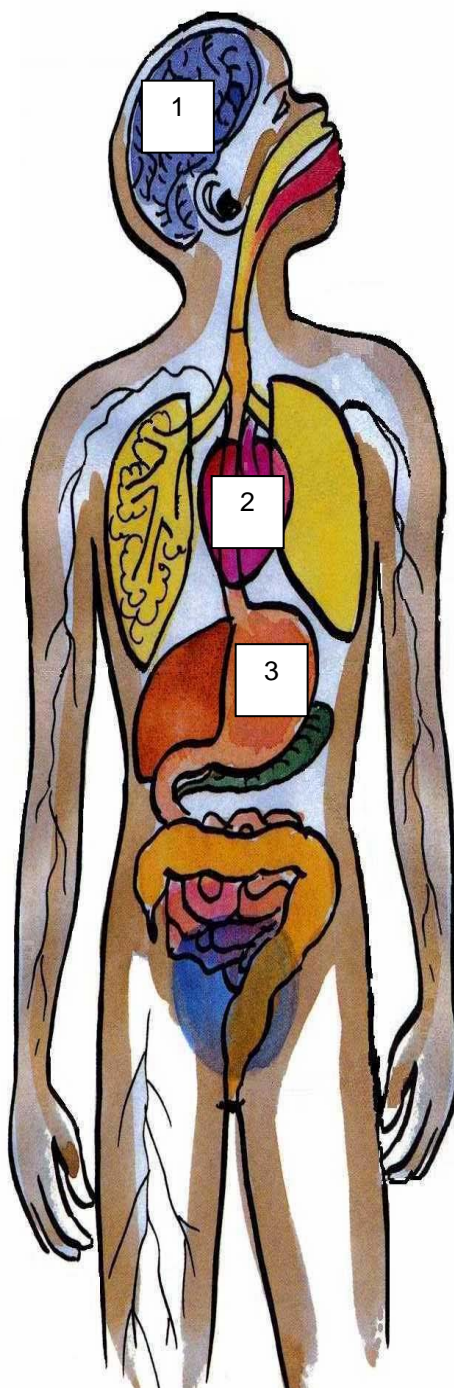
- Hallucination and paranoia
- Loss of concentration
- Anxiety and fear
- Delusion
- Bizarre behaviours
- Aggression and violence

2. Heart

- High blood pressure
- Rapid and irregular heartbeat

3. Stomach

- Reduced appetite
- Stomach cramps
- Malnutrition



Effects of Amphetamines Use

Signs & Symptoms

- Dry mouth
- Sweating
- Large pupils
- Wide awake and alert
- Increased heart rate, breathing and blood pressure
- Less eating
- Can't sleep
- Restless and excited
- Panic and anxiety
- Anger and aggression

Inhalants

1. Brain

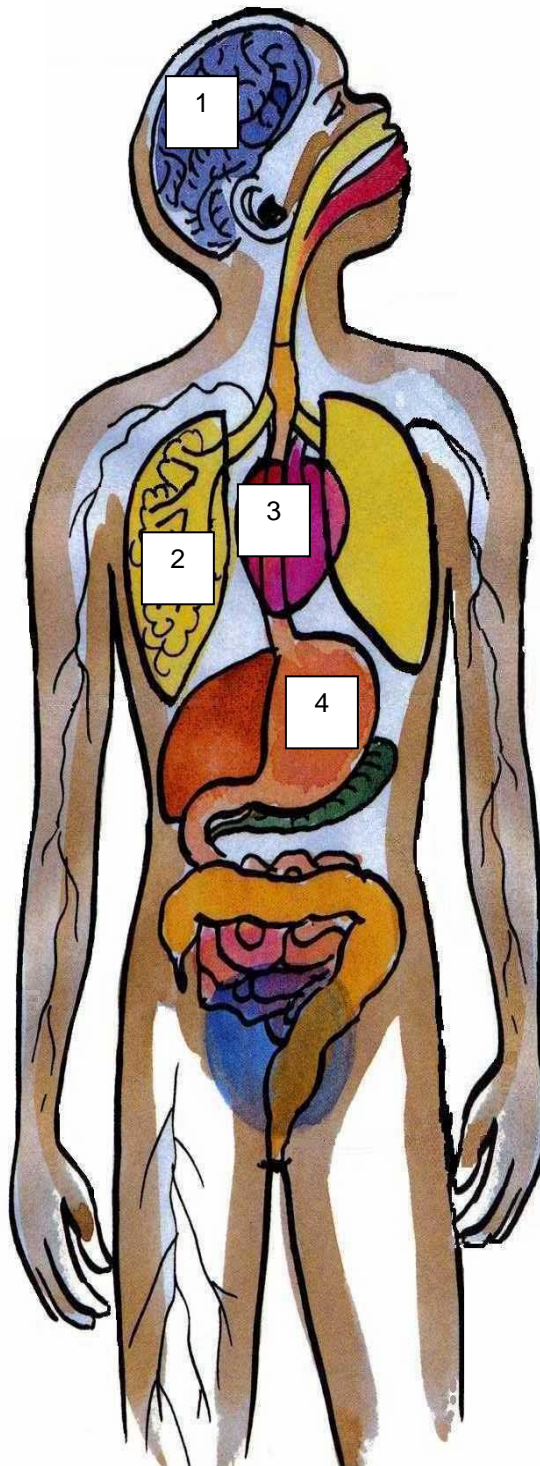
- Memory loss
- Hallucination
- Brain damage
- Stroke
- Fits

2. Lungs

- Coughing
- Lung damage

3. Heart

- High blood pressure
- Enlarged heart



Effects of Inhalants use

Signs & Symptoms

- Fits
- Hallucination
- Memory loss
- Headaches
- Numbness
- Vomiting

4. Digestive problems

- Nausea and vomiting
- Constipation
- Weight loss and malnutrition

Benzodiazepines

1. Brain

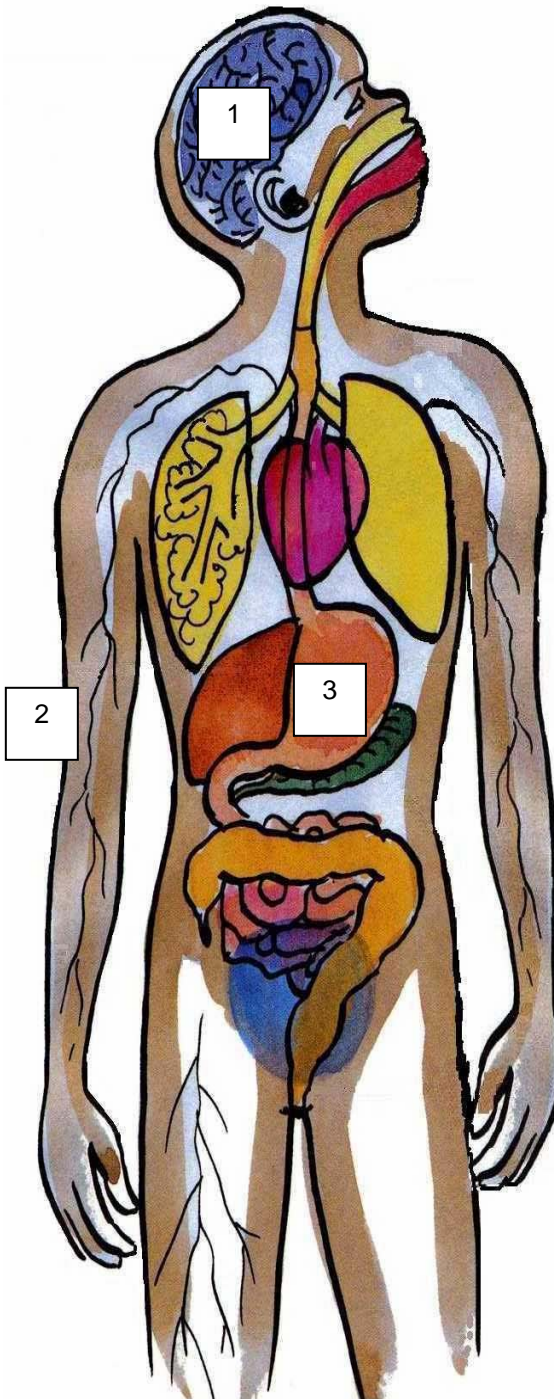
- Memory loss
- Headaches
- Blurred vision
- Drowsiness
- Increased sleep
- Can't concentrate
- Impaired coordination

2. Skin

- Rashes

3. Digestive system

- Dry mouth
- Nausea
- Constipation



Effects of Benzodiazepines

Signs & Symptoms

- Dry mouth
- Skin rash
- Dizziness
- Headaches
- Nausea
- Blurred vision
- Drowsiness
- Loss of memory
- Loss of coordination
- Constipation
- Confusion

Heroin

1. Brain

- Drowsiness
- Loss of coordination
- Impaired vision

2. Lungs

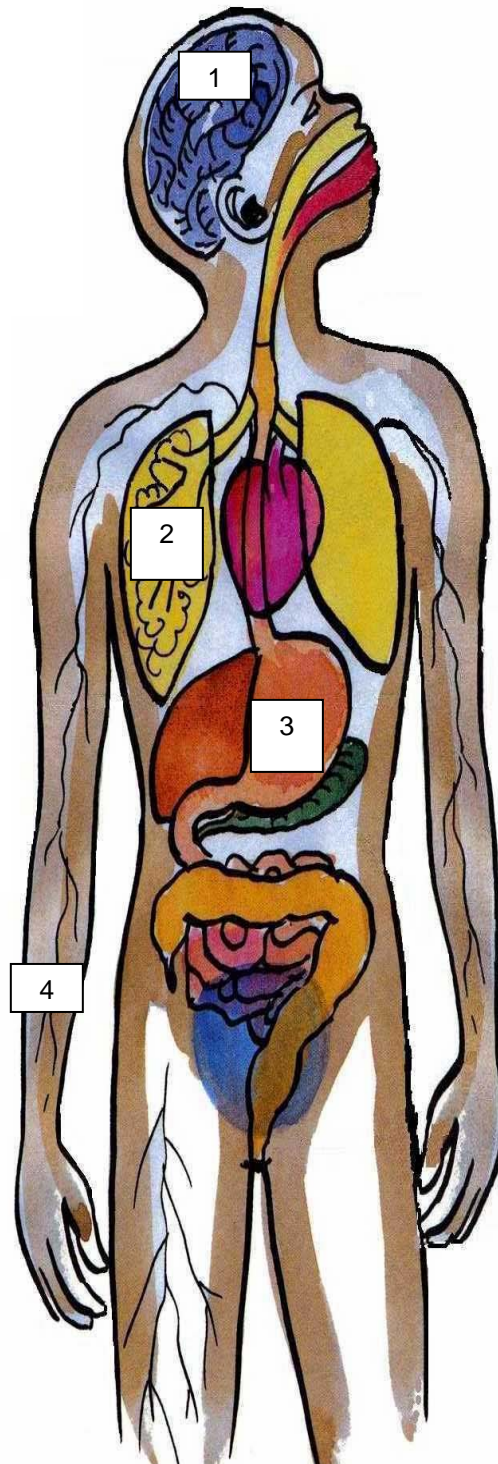
- Slowed breathing
- Pneumonia

3. Digestive problems

- Nausea and vomiting
- Constipation
- Weight loss and malnutrition

4. Veins

- Collapsed veins
- Abscesses
- Blood borne viruses

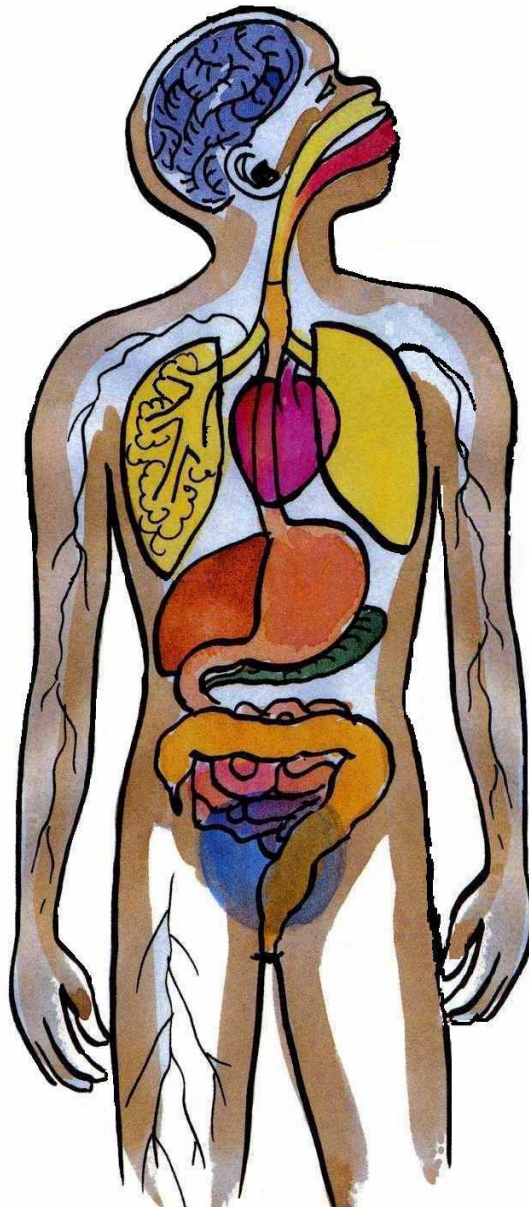


Effects of Heroin Use

Signs & Symptoms

- Nausea and vomiting
- Pinpoint pupils
- Drowsiness
- Itching and scratching
- Loss of coordination
- Confusion
- Constipation

All Drugs



Effects of All drugs use
<ul style="list-style-type: none"> • Difficulties paying for food & bills • Problems with diet and nutrition • Aggressive behaviours and fights • Legal Strife • Problems with emotional well-being (feeling down in the dumps, sad, slack, nervous, scared, hopeless) • Unsafe in the home • Thoughts of harming self or others
<p>Note: Workers to discuss the effects of drug use with clients regarding the 7 Ls model eg. Liver, lover, livelihood, lores, legal, land, loss and grief.</p>

Combining drugs use can increase the effects however it can also increase the risk of serious health consequences including mental, emotional, physical and social wellbeing

Emotional well-being

Depression

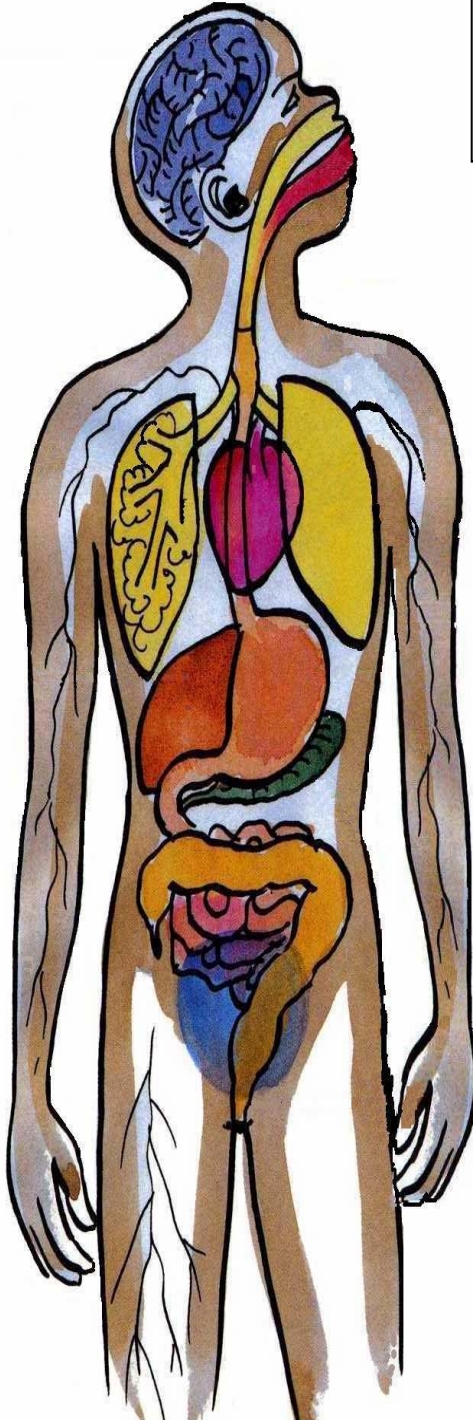
- Feeling sad, slack or down in the dumps
- Unable to think clearly
- Thoughts of harming yourself

Trauma

- Shock from stressful events
- Nightmares
- Flashbacks
- Memory lapses

Anger

- Feelings of rage
- Feeling hostile
- Having temper
- Behaving aggressively



Hallucination

Seeing or hearing things that other people don't see or hear

Anxiety

- Feeling nervous, scared or worried
- Sleeplessness
- Palpitations - heart racing
- Breathing problems
- Sweating
- Stomach upsets

Drug Use

- Using drugs to cope with life

Grief and Loss

- Feelings of loss related to a significant event in your life

Kava

1. Brain

- Worsening of pre-existing mental illness
- Light sensitivity
- Sleeplessness
- Decreased motivation
- Loss of muscle control

2. Skin

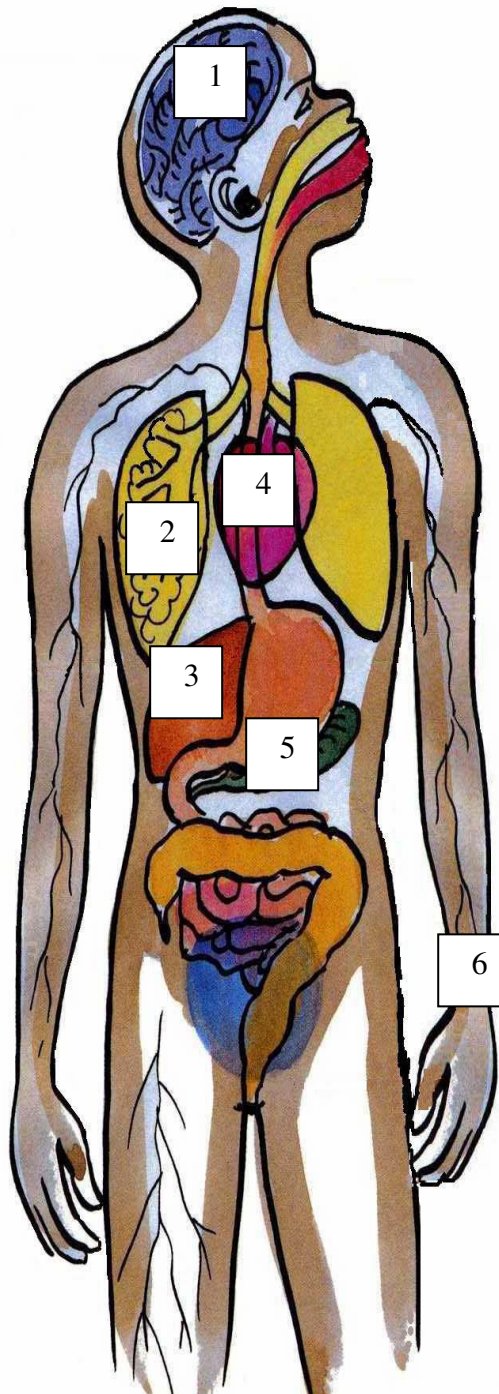
- Scaly skin "crocodile skin"
- Infections – particularly melioidosis

3. Liver and Kidney

- Biochemical changes
- Liver damage
- Blood in urine

4. Heart

- Contributing factor to heart disease
- Pulmonary hypertension



Effects of Kava use

Signs & Symptoms

- Difficulty breathing
- Scaly skin
- Memory loss
- Relaxation of muscles
- Numbness in mouth or throat
- Vomiting
- High blood pressure
- Red eyes

5. Stomach

- Malnutrition
- Gastritis
- Nausea

6. Muscles

- Tingling and numbness
- Involuntary writhing of limbs and trunk
- Loss of body fat
- Loss of muscle control

People who drink kava experience many health problems